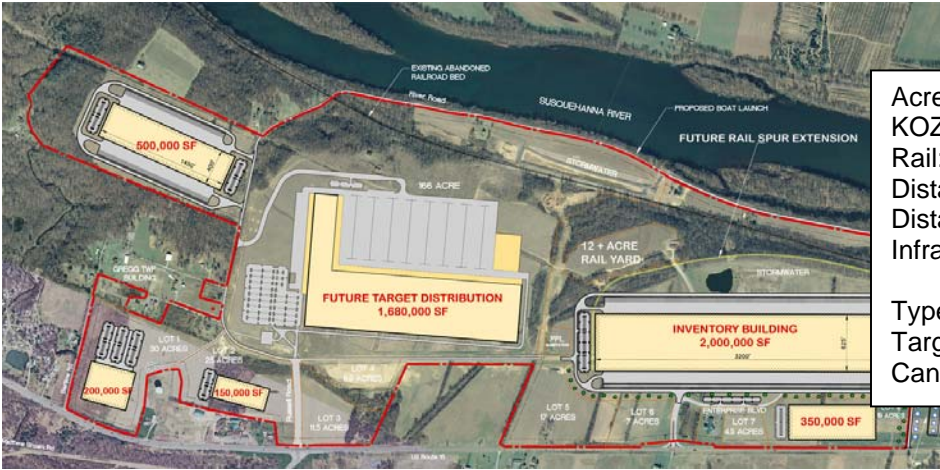


Select Industrial Parks & Land



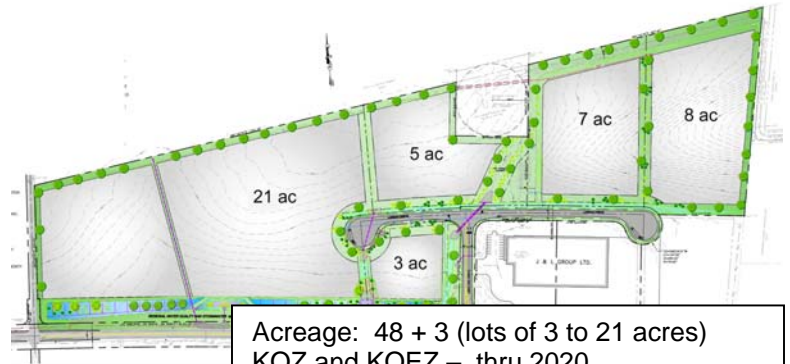
Great Stream Commons – Concept Plan Allenwood, PA Union County



Acreage: 300 of 670
 KOZ thru 2017 & KOEZ thru 2020
 Rail: Scheduled for 2012 q3
 Distance to I-80: 5 mi
 Distance to US 15: 0 mi
 Infrastructure: Shovel Ready, Public w, w/w,
 3 phase electric, natural gas
 Type: Commercial & Manufacturing
 Target Corp owns 166 acres
 Can facilitate 2 mil sf rail served building



Pawling Station Selinsgrove, PA Snyder County



Acreage: 48 + 3 (lots of 3 to 21 acres)
 KOZ and KOEZ – thru 2020
 Rail: Feasible
 Distance to I-80: 20 mi
 Distance to US 11/15: 2 mi
 Distance to US Rte 522: 0
 Infrastructure: Sites are Shovel-Ready
 Type: Light Industrial



Mifflin County Industrial Lewistown, PA Mifflin County



Acreage: 2- 30 acres,
 (37 ac nearby)
 KOZ through 2013
 Rail: Yes
 Distance to I-80/99: 40 mi
 Distance to US 22/522: .5 mi
 Distance to US 322: 2 mi
 Infrastructure: heavy
 Other Tenants: Overhead
 Door, Trinity Packaging,
 GE Inspection Technologies
 Type: Heavy to Light Industrial

Other Developable Land – Montour County

16 acres – Commercial zoned
 Boedker Property, Ridge Road & Rte 11,
 Danville, PA
 Feasibility Study Good, Road Access,
 Municipal w & w/w